



Kaneohe Yacht Club

2018 SUMMER CIRCUIT SAILING INSTRUCTIONS

1 RULES

1.1 The regatta will be governed by rules as defined in the Racing Rules of Sailing (RRS)

1.2 The US Sailing Prescriptions to RRS 60, 63.2 and 63.4 will not apply.

1.3 (a) Bow sprit shall be fully retracted at-all-times except when the spinnaker is set or actively being set or recovered, and shall be retracted at the first reasonable opportunity after dousing the spinnaker.

(b) Approaching a windward mark without the spinnaker set, the bow sprit shall not begin to be extended until after the bow of the boat has reached the mark. If for a wind shift, or any other reason, the spinnaker is flown on a windward leg, then the bow sprit shall be fully extended and the spinnaker set before the boat reaches the Zone at the windward mark.

2 NOTICES TO COMPETITORS will be posted on the official notice board on the North wall of the Ma Shultz Lounge just inside the main entry way of the Kaneohe YC clubhouse.

3 CHANGES TO SAILING INSTRUCTIONS will be posted at least two hours prior to the first start on the date it takes effect except that any change to the schedule of races will be posted by 1800 on the day before it will take effect.

4 SIGNALS MADE ASHORE will be displayed on the KYC flagpole. Code flag L will signal that a change to the Sailing Instructions has been posted on the official notice board.

5 SCHEDULE OF RACES

5.1 Four races are planned for each day, on June 3rd, 10th, and 24th, 2018 with the first Warning Signal at 1055.

5.2 Races that are postponed or abandoned for the day may be re-sailed unless it is the final day of racing.

5.3 To alert boats that a race or sequence of races will begin soon, multiple sounds may be made approximately one minute before a warning signal is made.

6 CLASS FLAG, BOW NUMBERS and SAIL NUMBERS

6.1 The class flag will be the IRF flag or a solid yellow flag.

6.2 Each boat will be assigned a bow number, which will be provided at the skippers meeting. They shall be affixed to both bows approximately six inches below deck level and 12 inches back from the bow.

6.3 All boats shall display only the sail numbers under which she has entered, unless prior written approval is obtained from the race committee.

7 RACING AREA is Kaneohe Bay (see Appendix A) between KYC and Coconut Island.

8 COURSES

8.1 The diagrams in Appendix B illustrates the courses, the order in which the marks are to be passed and the side on which a mark is to be left.

8.2 Numerical pennants will be displayed to signify the specific course to be sailed.

8.3 If one of the leeward gate marks is missing and not replaced by a mark boat in place displaying flag "M" and making repetitive sounds, boats shall round the existing leeward mark leaving it to port.

9 MARKS

9.1 Marks 1 and 1a will be either **yellow or orange** inflatable tetrahedrons
Marks 4s/4p will be **orange** inflatable pumpkins

9.2 If a buoy is attached by a line to the transom of the RC signal boat, the buoy and line are part of the starting/finishing mark

10 CHECK IN

10.1 Before the first warning signal of each day, all boats shall sail past the stern of the signal boat on starboard tack and check in by hailing their bow number. They shall continue to do so until their bow number is verbally acknowledged by the Race Committee.

10.2 Boats failing to check in accordance with 10.1 will be given a scoring penalty equal to 20% of the number of boats entered in the series, without a hearing (This changes RRS A5). This will apply to each boats first race of the day.

11 THE START

11.1 Races will be started by using RRS 26.

11.2 The starting line will be marked by an orange flag on the RC signal boat, and by an orange spar buoy opposite the RC signal boat.

12 RECALLS

- 12.1** Recalls will be signaled in accord with Rule 29. Individual Recalls may be hailed on VHF channel 68.
- 12.2** In the event of an Individual Recall, a failure to make or hear a hail shall not be grounds for redress under Rule 62.1.

13 CHANGING THE NEXT LEG OF THE COURSE

- 13.1** The RC may signal a change of course by displaying code flag C with repetitive sounds at a rounding mark before the leading boat has begun the next leg of the course.
- 13.2** A red or green flag may be displayed to indicate that the next mark is shifted to port or starboard. This modifies Rule 33.
- 13.3** The next mark may not yet be in the new position. Subsequent legs may be changed to maintain the course configuration without further signaling.

14 FINISHING

- 14.1** For windward finishes, the finishing line will be between a staff displaying a YELLOW flag on the finish boat and a Yellow spar buoy.
- 14.2** For downwind finishes, the finishing line will be on the opposite side of the signal boat from the starting line between a Yellow Flag on the signal boat and a Yellow Spar buoy.
- 14.3** Boats finishing after the RC has retired from the course shall report their order of finish and their time of finish to the Principal Race Officer for that day of racing.
- 14.4** Boats that have already finished are required to stay at least 50 yards away from the line, and stay clear of all boats still racing. A boat failing to observe this restriction may be protested by the RC.

15 TIME LIMITS

- 15.1** The RC may abandon a race in which the leading boat has not finished within 90 minutes of its start.
- 15.2** No race will be started after 1630. The time limit for all races is 30 minutes before sunset.

16 PROTESTS

16.1 A boat intending to protest based on an incident in the racing area that she is involved in or sees shall, at the first reasonable opportunity after she finishes, inform the race committee at the finishing line of her intent to protest and identify the protestee. A protest flag must be flown in accord with RRS 61.1(a).

16.2 Protests and Requests for Redress shall be submitted to the RC within 45 minutes after the RC signal boat docks and will be heard as soon as possible thereafter in the order of receipt.

16.3 Protest and Requests for Redress notices will be posted within 30 minutes after the protest time limit expires to inform competitors and witnesses of the time and place for a hearing.

16.4 In the absence of a protest committee, protests will be heard Wednesday the week following the race at 1900 hours, or at time that is agreed to by all parties.

17 SCORING Four races are required to be completed to constitute a series. When fewer than seven races have been completed, a boat's series score will be the total of her races scores. When from seven to nine races have been completed, a boat's series score will be the total of her race scores excluding her worst score. When ten or more races have been completed, a boat's series score will be the total of her race scores excluding her two worst scores. This modifies Appendix A2 of the RRS.

18 ABANDONED RACES which cannot be re-sailed by June 24th will not be rescheduled.

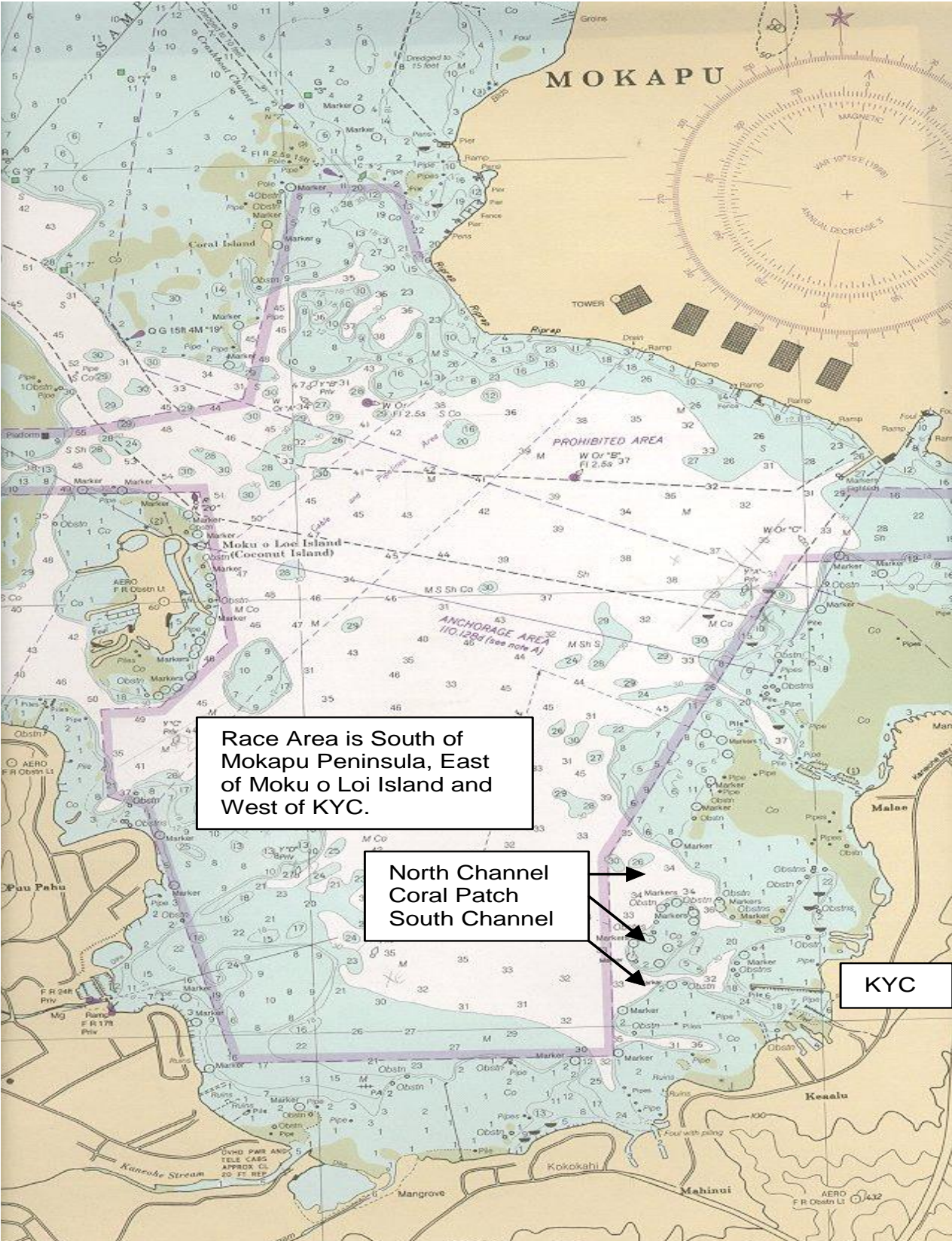
19 EQUIPMENT AND MEASUREMENT CHECKS

19.1 A boat and its equipment may be inspected at any time for compliance with the PHRF rules and the Sailing Instructions, and may be instructed by the RC or class measurer to proceed immediately to a designated area for inspection.

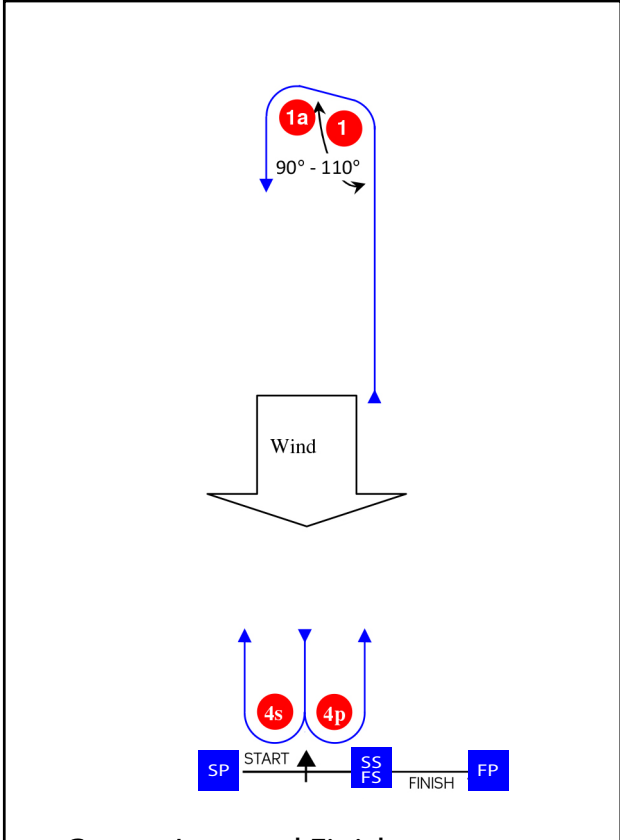
20. DISCLAIMER OF LIABILITY

20.1 Competitors participate in the regatta entirely at their own risk. See RRS 4 - Decision to Race. The organizing Authority will not accept any liability for material damage or personal injury or death sustained in conjunction with or prior to, during, or after the regatta. The safety of a boat and its crew is the sole and inescapable responsibility of the skipper who shall ensure that the boat is fully sound, thoroughly seaworthy, and manned by an experienced and physically able crew. Neither the establishment of regulations or inspection of a boat in any way limits or reduces the complete and unlimited responsibility of the skipper.

20.2 The skipper shall be responsible for the conduct of his crew. In the event of a serious breach of conduct, the destruction of property or the failure to comply with a reasonable request of any race officer or Committee Member, the skipper will be responsible for all damages and the boat may be subject to protest which, may include disqualification from the regatta.

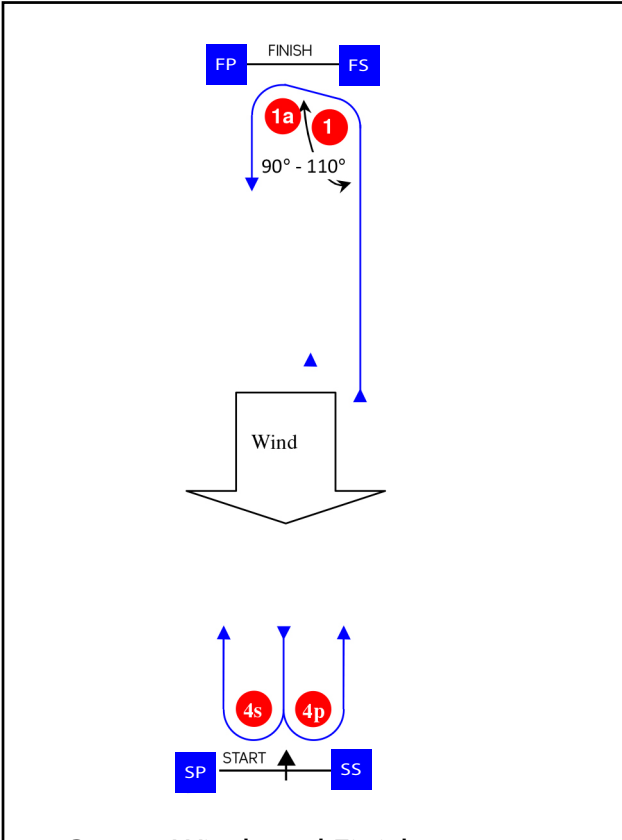


Course Illustrations - Windward Leeward with offset



Course Leeward Finish

Signal	Mark rounding order
1	Start-1-1a-4s/4p-1-Finish
3	Start-1-1a-4s/4p-1-4s/sp-1-Finish
5	Start-1-1a-4s/4p-1-4s/4p-1-4s/4p-1-Finish



Course Windward Finish

Signal	Mark rounding order
2	Start-1-1a-4s/4p-Finish
4	Start-1-1a-4s/4p-1-4s/4p-Finish
6	Start-1-1a-4s/4p-1-4s/4p-1-4s/s4-Finish

Mark	Description
	Orange/Yellow inflatable pumpkin
	Orange/Yellow inflatable pumpkin
	Orange inflatable pumpkins
	Starting mark starboard end Orange flag on boat
	Starting mark port end Orange spar buoy
	Finishing mark starboard end Yellow flag on boat
	Finishing mark port end Yellow spar buoy